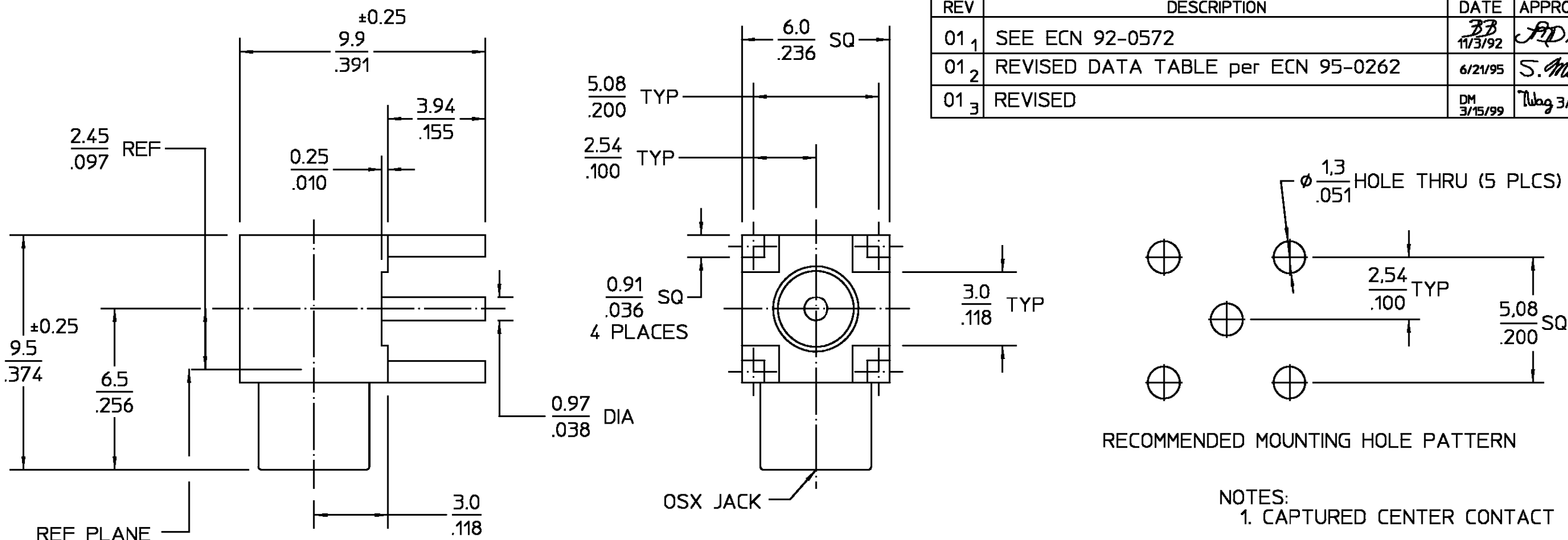


| REVISIONS       |                                    |            |              |
|-----------------|------------------------------------|------------|--------------|
| REV             | DESCRIPTION                        | DATE       | APPROVED     |
| 01 <sub>1</sub> | SEE ECN 92-0572                    | 11/3/92    | AD 11/5/92   |
| 01 <sub>2</sub> | REVISED DATA TABLE per ECN 95-0262 | 6/21/95    | S. Mobley    |
| 01 <sub>3</sub> | REVISED                            | DM 3/15/99 | Wlog 3/16/99 |



RECOMMENDED MOUNTING HOLE PATTERN

NOTES:  
1. CAPTURED CENTER CONTACT

| ELECTRICAL  | MECHANICAL  | ENVIRONMENTAL  | HOUSING CAP   | BRASS PER ASTM-B-16 HALF HARD  | NICKEL PLATE PER QQ-N-290  |
|---|---|--|---|--|----------------------------|
| Nominal Impedance (Ohms) 50                                 | Force to Engage: (Lbs) 3.4 MAX  | Temperature Rating -65° to +165°C                        | DIELECTRIC  | TFE FLUOROCARBON PER ASTM-D-1457   | N/A                        |
| Frequency Range (GHz) DC to 6.0                             | & Disengage: (Lbs) 1.77 MIN - 4.5 MAX   | Vibration MIL-STD-202, Method 204, Condition B           | CENTER CONTACT  | BERYLLIUM COPPER PER ASTM B 196, ALLOY C17300, CONDITION H                   | GOLD PLATE PER MIL-G-45204 |
| Volt Rating (VRMS MAX) @ Sea Level 335                      | Center Contact Captivation Axial (Lbs) 4.5 @ 1 minute with .006" Displacement | Thermal Shock MIL-STD-202, Method 107, Condition b       | COMPONENT   | MATERIAL   | FINISH                     |
| VSWR 12:1 MAX   |   | Moisture Resistance MIL-STD-202, Method 106              | UNLESS OTHERWISE SPECIFIED DIMENSIONS ARE IN MILLIMETERS TOLERANCE ON DEC ANGLES ±0.13 ° 1° | AMPA Incorporated<br>140 Fourth Avenue<br>Waltham, MA 02451-7599             |                            |
| Insertion Loss .1dB MAX/1000 MHz                            |   | Corrosion - MIL-STD-202, Method 101, Condition B, 48 Hrs | DATE 10-19-90   |  |                            |
| Corona, 70,000 Ft (VRMS MIN) 250                            |   |  | CHECKED BY M.Y. 10-19-90  |  |                            |
| Dielectric Withstanding Voltage (VRMS MIN) @ Sea Level 1000 |   |  | APPD BY [Signature] 10-19-90  |  |                            |
| Contact Resistance (Milliohms MAX) Center Contact 5.0       |   |  |   |  |                            |
| Outer Contact 1.0   |   |  |   |  |                            |
| RF High Potential @ Sea Level (VRMS MIN @ 5 MHz) 670        |   |  |   |  |                            |
| I.R.(Megohms MIN) 10,000                                    |   |  |   |  |                            |
|   | XX.XX = mm<br>.XXX = in   |  | USE ASSY PROCEDURE  | TITLE OSX PRINTED WIRING BOARD RIGHT ANGLE JACK RECEPTACLE STRAIGHT TERMINAL |                            |
|   |   |  | NO. AP. N/A   | SIZE B   | CODE IDENT NO. 26805       |
|   |   |  |   | SCALE 6:1  | 5864-5001-10               |
|   |   |  |   |  | REV 01 <sub>3</sub>        |
|   |   |  |   |  | SHEET 1 OF 1               |

CUSTOMER DRAWING

AMP PART # 1061023-1  
SHEET 1 OF 1 REV A